

# Forest history, peatland development and mid- to late Holocene environmental change in the southern taiga forest of central European Russia

Elena Yu. Novenko<sup>a,b,\*</sup>, Andrey N. Tsyganov<sup>c</sup>, Natalia M. Pisarchuk<sup>d</sup>, Elena M. Volkova<sup>e</sup>, Kirill V. Babeshko<sup>c</sup>, Daniil N. Kozlov<sup>a,f</sup>, Pavel M. Shilov<sup>a</sup>, Richard J. Payne<sup>c,g</sup>, Yuri A. Mazei<sup>c,h</sup>, Alexander V. Olchev<sup>a,i</sup>

<sup>a</sup>Faculty of Geography, M.V. Lomonosov Moscow State University, Leninskie Gory 1, 119991, Moscow, Russia

<sup>b</sup>Institute of Geography Russian Academy of Science, Staromonetny Lane, 29, 119017, Moscow, Russia

<sup>c</sup>Department of Zoology and Ecology, Penza State University, Krasnaya Str. 40, 440026, Penza, Russia

<sup>d</sup>Faculty of Geography, Belarusian State University, Avenue Nezavisimosti, 4, 220030, Minsk, Belarus

<sup>e</sup>Department of Biology, Tula State University, Lenin Avenue, 92, 300600, Tula, Russia

<sup>f</sup>V.V. Dokuchaev Soil Science Institute, Pyzhyovskiy Lane 7/2, 19017, Moscow, Russia

<sup>g</sup>Environment, University of York, York YO105DD, United Kingdom

<sup>h</sup>Faculty of Biology, M.V. Lomonosov Moscow State University, Leninskie Gory 1/12, 119991, Moscow, Russia

<sup>i</sup>A.N. Severtsov Institute of Ecology and Evolution, Russian Academy of Science, Leninskiy Avenue, 33, 119071, Moscow, Russia

(RECEIVED January 17, 2017; ACCEPTED September 20, 2017)

## Abstract

Understanding the long-term ecological dynamics of boreal forests is essential for assessment of the possible responses and feedbacks of forest ecosystems to climate change. New data on past forest dynamics and peatland development were obtained from a peat sequence in the southern Valdai Hills (European Russia) based on pollen, plant macrofossil, micro-charcoal, peat humification, and testate amoeba analyses. The results demonstrate a dominance of broadleaved forests in the study area from 7000–4000 cal yr BP. *Picea* was initially a minor component of this forest but increased in cover rapidly with climatic cooling beginning at 4000 cal yr BP, becoming the dominant species. Broadleaved species persisted until 900 cal yr BP, with evidence for intensified felling and forest management over recent centuries. Over the last four hundred years there is evidence for widespread paludification and the establishment of *Picea-Sphagnum* forests. These data demonstrate how modern wet woodlands have been shaped by a combination of climatic and anthropogenic factors over several millennia. The results also demonstrate the value of a multiproxy approach in understanding long-term forest ecology.

**Keywords:** Pollen; Plant macrofossils; Testate amoebae; Peatlands; *Sphagnum*-spruce forest; Central Forest State Natural Biosphere Reserve

## INTRODUCTION

Over recent decades, numerous studies have begun to provide an understanding of past variability in boreal forest ecosystems and the impacts of changing climate. Studies are increasingly using records of past forest change to understand modern forest environments and predict possible future changes (e.g., Bonan et al., 1992; Foley et al., 1994; Oltchev et al., 2002a, 2002b; Soja et al., 2007; Bonan, 2008; Novenko et al., 2009a; Shugart and Woodward, 2011). Boreal forest is the second largest biome globally and is both sensitive to

climate change and plays an important role in climate regulation through carbon sequestration and storage and by influencing water and radiation budgets (Malhi et al., 1999; Grace et al., 2001; Luyssaert et al., 2008). Current climate changes, including increasing air temperature, changing precipitation patterns, and increasing frequency of extreme weather events (e.g., heat waves and droughts), combined with rising CO<sub>2</sub> concentrations may significantly change the productivity and distribution of boreal forests (IPCC, 2013). For instance, longer growing seasons and CO<sub>2</sub> fertilization are likely to increase gross primary production (Bonan et al., 1992). However, the gradual increase in annual precipitation and surface moisture observed in many boreal forest regions may intensify paludification of soils and thus reduce forest productivity (Olchev et al., 2013; Pluchon et al. 2014). It is

\*Corresponding author at: Faculty of Geography, M.V. Lomonosov Moscow State University, Leninskie Gory 1, 119991, Moscow, Russia. E-mail address: lenanov@mail.ru (E.Yu. Novenko).

also likely that climate change will increase the frequency and intensity of forest disturbances such as fires, fungal diseases, and insect outbreaks (Ruckstuhl et al., 2008; Kilpeläinen et al., 2010). The possible responses of boreal forests to projected climate changes remain poorly quantified and will depend on the interaction of multiple forcing factors. Reconstructions of past environmental and ecological changes are essential to understand the potential mechanisms. Analysis of forest and wetland ecosystem dynamics during the mid- and late Holocene, characterized by periods of cooling and warming (Wanner et al., 2008), may be particularly valuable.

In the European boreal zone, the available paleoecological data indicate that coniferous forests expanded between 5700 and 2500 cal yr BP (Kremenetski et al., 2000; Kalis et al., 2003; Seppä and Poska, 2004; Giesecke and Bennett, 2004; Giesecke, 2005; Zernitskaya and Mikhailov, 2009; Novenko et al., 2009b; Marquer et al., 2014). Conifers replaced broadleaved deciduous species, which had been abundant during the Holocene thermal maximum (8000–5500 cal yr BP), apparently due to climatic cooling and increased land surface wetness (e.g., Seppä and Birks, 2001; Novenko et al., 2009b; Olchev and Novenko, 2011), in combination with increasing anthropogenic disturbance (Clear et al., 2015; Novenko et al., 2015). During recent decades, a large number of studies have explored the paleoecology of eastern Europe and European Russia, including studies focused on vegetation history, wetland development, and carbon accumulation by peatlands (Arslanov et al., 1999; Stančikaite et al., 2006; Niinemets and Saarse, 2009; Heikkilä and Seppä, 2010; Mauquoy et al., 2002; Mauquoy and Yeloff, 2008; Mitsch et al., 2013; Tuittila et al., 2014; van der Linden et al., 2014). Substantial knowledge gaps remain, however. Extensive areas of global boreal forest are paludified, with important implications for their ecosystem functioning, but the history of this paludification is not well understood, despite its importance in terms of vegetation change and wetland development. This is particularly true in the extensive southern taiga region of the East European Plain, where paludified forests are widespread (Hytteborn et al., 2005).

This study focuses on exploring these issues in a poorly investigated region of the East European Plain: the southern Valdai Hills. This is an area in which *Sphagnum*-Spruce (*Picea abies*) forest is widespread due to the combination of flat relief and elevated groundwater levels due to poorly drained soils. The study focuses on the Central Forest State Natural Biosphere Reserve (CFSNBR), an area under conservation management that is relatively distant from regions of industry and intensive agriculture and has few roads, allowing the possibility to study forest response to environmental change in a relatively natural setting. Recent studies in the CFSNBR have emphasized the importance of climatic factors and hydrological regime in vegetation history and peatland development (Minayeva et al., 2008; Novenko et al., 2009a, 2009b; Glushkov et al., 2016; Payne et al., 2016). Previous reconstructions of environmental change have demonstrated considerable climate variability and

complex vegetation dynamics during the Holocene, characterized by alternating phases with domination of spruce and mixed coniferous broadleaved forests (Novenko et al., 2009b; Payne et al., 2016). Previous studies in the CFSNBR have focused particularly on one large raised bog (“Staroselsky Moch”) and are therefore well-suited for understanding large-scale environmental change, but poorly suited for understanding fine-scale changes occurring within the forest itself, such as the history of paludification.

The main aim of this study is to reconstruct the vegetation and paludification dynamics of a local depression located directly within the *Sphagnum*-Spruce (*Picea abies*) forest. The study site is situated in the core area of the CFSNBR, 6 km away from the Staroselsky Moch site. In this study we reconstruct environmental changes for the last 7000 yr using pollen, plant macrofossils, and testate amoeba analysis from radiocarbon-dated peat sequences. To provide a paleoclimatic context for interpreting the ecological changes at a local scale, the results are compared with paleoclimatic reconstructions from Staroselsky Moch (Novenko et al., 2009a) and other paleoecological data from the region (Minayeva et al., 2008; Payne et al., 2016).

## STUDY AREA

The CFSNBR is situated in the southern Valdai Hills, in the Tver region of European Russia (56°35'N, 32°55'E; Fig. 1), located at the southern margins of the former Weichselian ice sheet. The total area of the nature reserve is about 705 km<sup>2</sup>. The study area is a slightly hilly plain with elevations of 220–250 m asl, reaching a maximum of 280 m asl on a moraine ridge that forms the watershed between the Caspian and the Baltic Sea drainage basins. The climate is temperate and moderately continental, with relatively cold winters (mean January temperature = −10°C), warm summers (mean July temperature = 17.1°C), and a mean annual temperature of 4.1°C (meteorological observations of the CFSNBR, since 1963). Mean annual precipitation is ~700 mm (Desherevskaya et al., 2010), with more than a half of this falling as rain during summer and autumn.

Vegetation cover is primarily (47%) coniferous forest of *Picea abies* (L.) Karst. *Betula pubescens* Ehrh., *B. verrucosa* Ehrh.; *Populus tremula* L. woodlands are common in areas affected by wind damage or forest fires (about 40%); *Alnus glutinosa* (L.) Gaertn. is abundant in wetter river valleys (1–2%). Much of the forest area has a dense ground-cover of *Sphagnum* and brown mosses, with peatlands covering about 16% of the total study area.

The study site is a *Sphagnum*-Spruce forest with peat deposits from 20 to 120 cm deep across a 600m-wide area between moraine ridges (Fig. 1). As there is no formal name for this site, we use the name “Lesnoye” peatland. The site can be classified as *Piceeta fruticoso-sphagnosa* with an admixture of birch species (*Betula pubescens* Ehrh. and *Betula verrucosa* Ehrh.) amongst *Picea abies* (L.) Karst., a shrub layer of *Vaccinium myrtillus* L. and *V. vitis-idaea* L., and significant cover of *Carex globularis* L. and *Linnaea*

borealis L. The dense moss layer includes *Sphagnum magellanicum*, *S. angustifolium*, and *S. balticum*.

## MATERIALS AND METHODS

Detailed topographic mapping of the study area and peat depth measurements were undertaken in summer 2013 (Fig. 1). In August 2014, four peat monoliths were extracted from the peat deposits (Fig. 1). Monolith 1 (total depth of 85 cm) was sub-sampled for pollen, microscopic charcoal, testate amoebae, peat humification, and loss on ignition analyses at 1 cm intervals. Samples for plant macrofossil and peat decomposition analyses were extracted at 2–4 cm intervals. Monoliths 2 and 3 (38 and 25 cm depth, respectively) were sub-sampled for plant macrofossil analysis and peat decomposition at 5 cm intervals. Monolith 4 (total depth of 40 cm) was used to collect an additional basal sample of the peat for radiocarbon dating.

Chronologies for the monoliths were established by radiocarbon dating bulk peat samples (1 cm thick). In total, nine peat samples were collected (Table 1) with dating horizons positioned approximately every 20 cm in most monoliths. Radiocarbon dating was conducted at the radiocarbon laboratory of the Institute of Geography of the Russian Academy of Science. The  $^{14}\text{C}$  dates were calibrated and age-depth models produced using the “clam 2.2” package (Blaauw, 2010) in R (R Core Team, 2014). Pre-bomb radiocarbon dates were calibrated using the IntCal13 (Reimer et al., 2013) calibration curve, and post-bomb dates using the “postbomb\_NH1” curve (Hua et al., 2013). All calculations were undertaken at 2-sigma level.

Samples for macrofossil analysis (5–10 cm<sup>3</sup>) were disaggregated in water and washed through a 0.25 mm mesh sieve. The plant remains were picked out under a binocular microscope and identified following Katz et al. (1977) and Dombrovskaya et al. (1959). The plant macrofossil content was presented by taxon as percentages of the total sum of identified remains. The degree of peat decomposition (R) was quantified as the percentage of amorphous mass and tissues without cell structure relative to the total microscopic field of view (Lishtvan and Korol, 1975). Loss on ignition (LOI) was determined following the protocol of Dean (1974). Weighed, dried, 50 g samples were combusted at 550°C, cooled in a desiccator, and re-weighed. Peat humification was determined using the standard alkali-extraction and colorimetry method (Chambers et al., 2010, 2011) based on heating 0.2 g of dried, ground peat in 100 mL of 8% NaOH at 95°C for 1 h. The extract was diluted to 200 mL with distilled water and filtered (Whatman No. 1). The light absorbance of the extract was measured with a spectrophotometer (KFK-3-01-“ZOMZ”, Russia) at a 540 nm wavelength. Readings were corrected for loss on ignition using the formula  $A_1 = A_0 / \text{LOI}$ , where  $A_1$  is the corrected absorbance values,  $A_0$  is the raw absorbance value, and LOI is loss on ignition expressed as a proportion.

Samples for pollen analysis were prepared following Moore et al. (1991). The treatment included heating with

10% KOH for 10 min to remove the humic material, followed by acetolysis in a water bath for 5 min to dissolve the cellulose. Calculation of relative pollen frequency was based on the total terrestrial pollen sum (arboreal pollen (AP) and non-arboreal pollen (NAP), spores were not included). A minimum total of 500 pollen grains (AP + NAP) per sample were counted. Pollen identification followed Reille (1992) and Beug (2004). In order to determine pollen and charcoal concentrations, *Lycopodium* tablets were added to each sample (Stockmarr, 1971). Pollen diagrams were constructed using Tilia and TGView programs (Grimm, 1990). Microscopic charcoal concentrations were assessed by direct microscopy (400× magnification) following the point-count methodology (Clark, 1982; Finsinger et al., 2008). At least 200 particles (the sum of charcoal particles and *Lycopodium* spores) were counted. Results are presented as micro-charcoal accumulation rate (particles cm<sup>-2</sup> yr<sup>-1</sup>). Stratigraphic zones based on plant macrofossils and pollen assemblages were defined by constrained incremental sum of squares (CONISS) cluster analysis (Grimm, 1987).

Samples for testate amoeba analysis were prepared for microscopy using a modified version of the water-based preparation method proposed by Hendon and Charman (1997). Samples were soaked in distilled water for 24 h, agitated on a flask shaker for 5 min, sieved through a 500 µm mesh to remove coarse material, and left to settle for an additional 24 h. The supernatant was decanted off and the samples were mixed with neutralized formaldehyde and stored in glass vials (Mazei et al., 2015). Two millilitres of the concentrated sample were placed in a Petri dish and inspected at 160× magnification under a dissecting microscope. All testate amoebae were identified and counted in 200 microscopic fields. Testate amoeba data were analysed and plotted using the package “Analogue” (Simpson, 2007) in R (R Core Team, 2014).

A Modern Analogue Technique (MAT) reconstruction of total woodland coverage in a 20 km area surrounding the study site was undertaken based on the fossil pollen data. The approach is based on analogue matching of fossil pollen assemblages to modern pollen data sets and was originally developed by Overpeck et al. (1985) and extended by Nakagawa et al. (2002); full details are presented in Novenko et al. (2014, 2015). The modern calibration dataset consisted of 720 surface pollen samples from a wide variety of landscapes in Europe and West Siberia (30–55°N, 45–65°E) from the European Pollen Database (Davis et al., 2013) and the Russian Pollen Database (Chepurnaya and Novenko, 2015). We estimated the proportion of forest cover within a radius of 20 km using MODIS satellite images and Vegetation Continuous Fields estimates of modern tree cover (Hansen et al., 2005) for each location. As a measure of dissimilarity between fossil and modern pollen assemblages, squared-chord distances (SCD) were calculated. The assemblages were considered to be analogous if SCD values were less than 0.2. For each fossil assemblage, the eight best modern analogues were identified; the corresponding data for their woodland coverage were averaged and accepted as a

reconstructed value. MAT calculations were performed with Polygon 2.2.4 (<http://polsystems.rits-palaeo.com>). Leave-one-out cross-validation showed a relatively strong correlation ( $R^2 = 0.57$ , RMSEP = 10.8%) of pollen-based modern forest cover reconstructions with original MODIS measurements (Novenko et al., 2014).

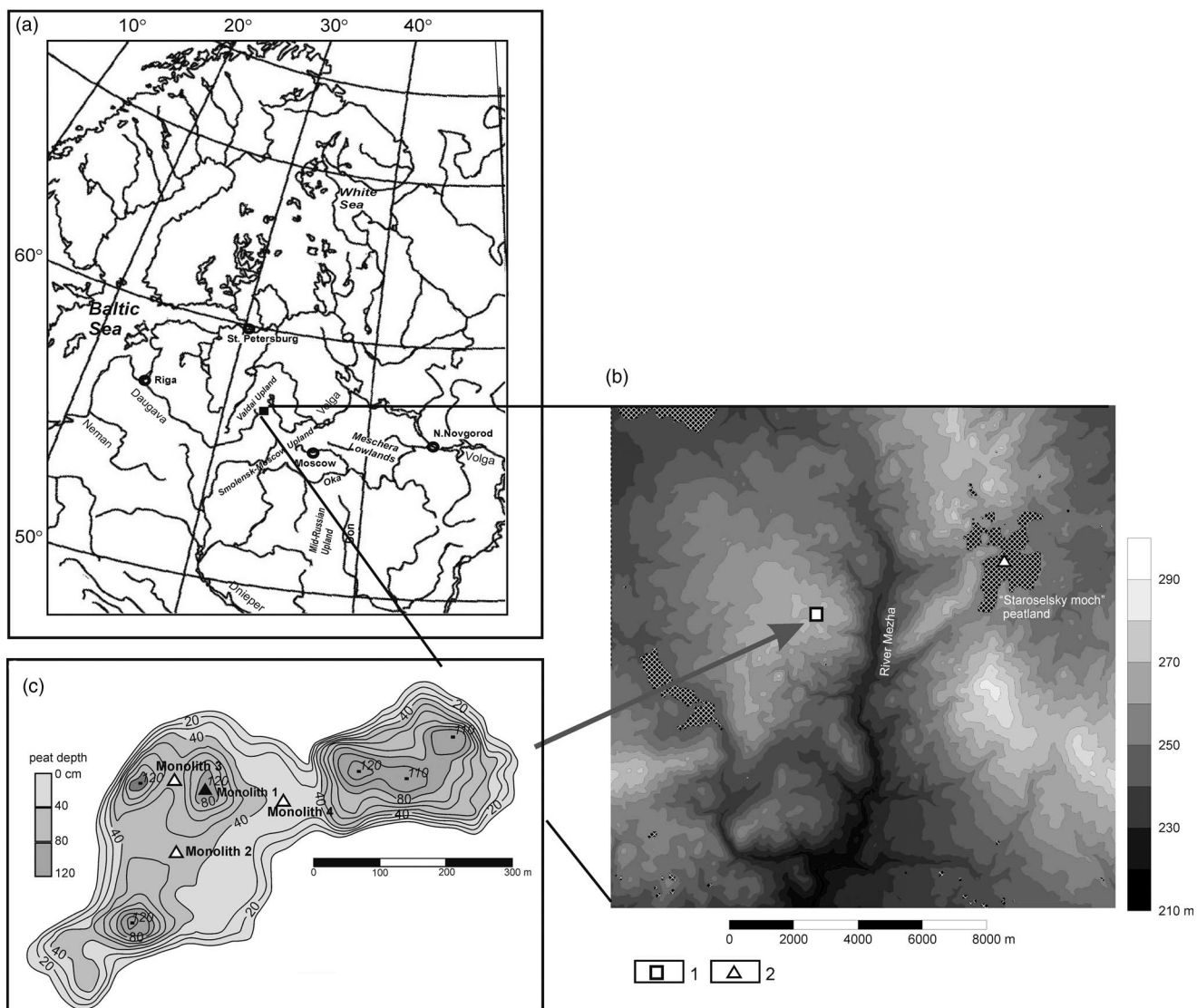
## RESULTS

### Age-depth model, peat initiation and accumulation

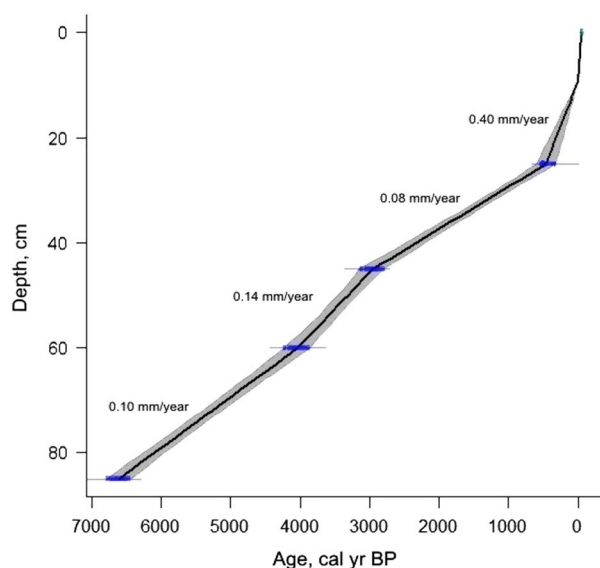
The topographic survey and peat depth measurements showed that the underlying topography of the site is complex and characterised by multiple depressions (Fig. 1). These depressions may have served as wet nucleation points, promoting the paludification of the wider area. Based on the

age-depth model of Monolith 1 (Fig. 2), peat accumulation rates were  $0.10 \text{ mm yr}^{-1}$  during the period from 6600 to 3960 cal yr BP; increased to  $0.14 \text{ mm yr}^{-1}$  between 3960 and 2900 cal yr BP; declined to  $0.08 \text{ mm yr}^{-1}$  for 2900–500 cal yr BP; and were highest ( $0.44 \text{ mm yr}^{-1}$ ) over the last 500 years. Accounting for the errors of the dates and limitations of the linear interpolation age-depth model construction, peat accumulation can be considered broadly consistent for most of the Holocene, increasing in the recent past due to the transition to relatively undecomposed surface peat.

Radiocarbon dating of the basal sample from Monolith 4 showed that peat initiation in this location, most likely representing lateral expansion of the wetland from the nearby depressions, took place around 1600 cal yr BP. The basal peat layers included wood and charcoal fragments, suggesting a possible role for burning in peat initiation.



**Figure 1.** Location of the study area and the core site locations. (a) Location of the study area. (b) Digital Elevation Model of the Central Forest State Nature Biosphere Reserve showing location of the sampling sites (1, the Lesnoye peatland; 2, the Staroselsky Moch peatland). (c) Peat depth within the *Sphagnum* spruce forest and the location of peat monoliths.



**Figure 2.** (color online) Age-depth model for Monolith 1 based on radiocarbon dates listed in Table 1.

Lateral expansion of the wetland affected more elevated sites later, with basal dates from Monoliths 2 and 3 around 900 cal yr BP (Table 1).

### Plant macrofossil, peat decomposition, humification and organic matter content

Plant macrofossil analysis of Monolith 1 indicated that the peat deposits could be divided into four macrofossil assemblage zones (MAZ; Fig. 3A). MAZ 1 (86–59 cm, 6600–4000 cal yr BP) is characterized by well-decomposed ( $R > 70\%$ ) peat dominated by graminoid remains. Particularly high abundance of *Phragmites* and *Menyanthes* was observed at 80–72 cm and implies considerable nutrient input 6100–5300 cal yr BP. Some tree macrofossils were identified (5–7% *Picea abies*, *Pinus sylvestris*, *Betula* sp., and *Salix* sp.) and mosses were rare.

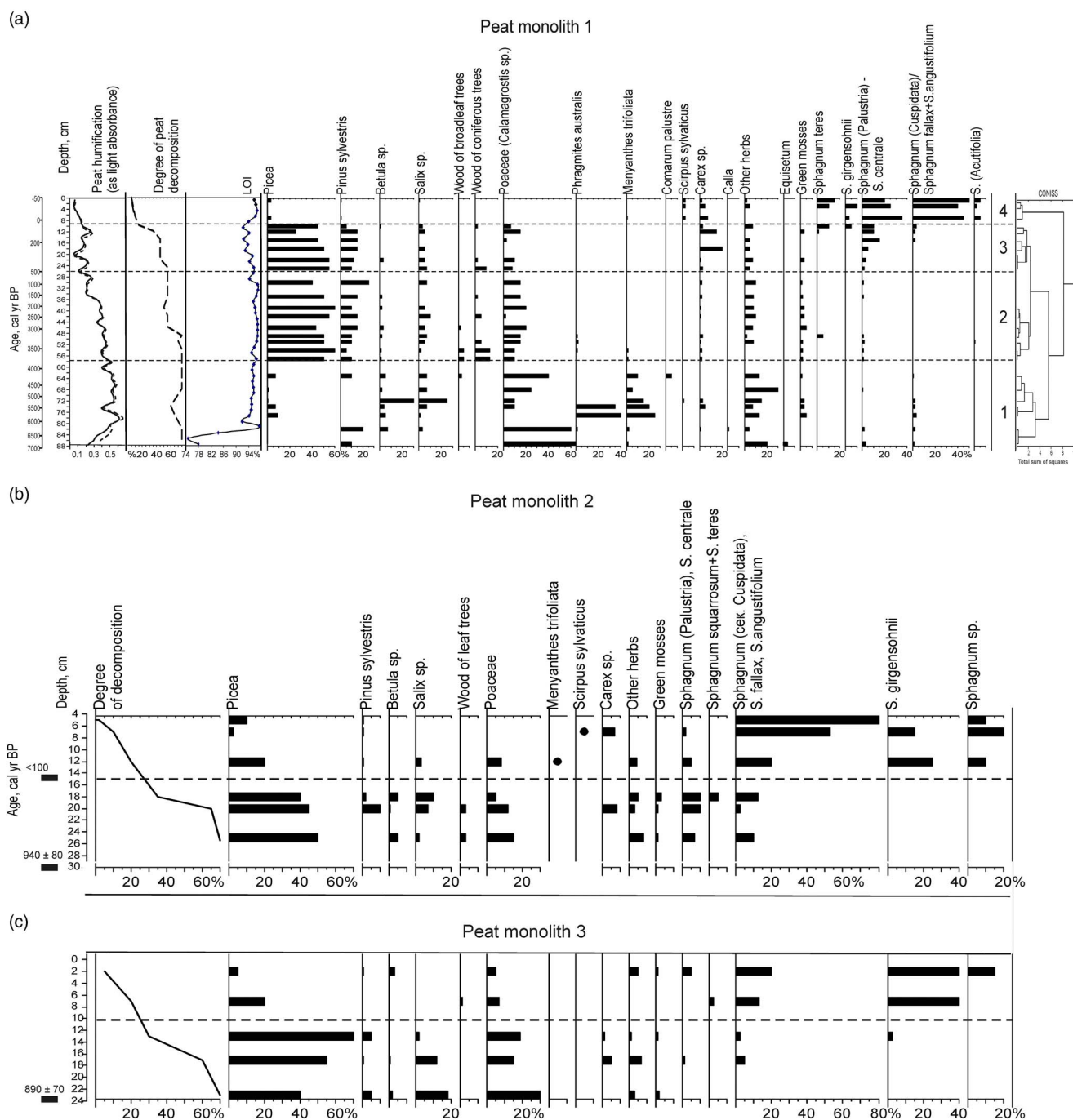
In MAZ 2 (59–26 cm, 4000–500 cal yr BP), the proportion of tree macrofossils increased (*Picea abies*, 50–60%; *Pinus sylvestris*, 10–20%) and wood fragments of broadleaved trees were noted while graminoids declined (<20%). The peat composition in MAZ 3 (26–9 cm, 500–5 cal yr BP) was similar to the previous zone, although the degree of decomposition decreased to 20%. Remains of *Picea abies* and graminoids were still abundant, with *Sphagnum* mosses as significant component of the assemblage for the first time (up to 10%). MAZ 4 (9–0 cm, 5 cal yr BP– present) was characterized by poorly decomposed (10–15%) *Sphagnum* peat formed by *Sphagnum fallax*, *S. angustifolium*, *S. centrale*, and *S. teres*, with a small proportion of other *Sphagnum* mosses, wood, and other vascular plants.

Results of peat humification analysis from Monolith 1 correspond well with the microscopic peat decomposition analysis (Fig. 3A). Overall, peat humification increased with depth except for the bottom layers (88–86 cm, 7000–6400 cal yr BP), where it was exceptionally low because of the low proportion of organic matter. The next zone (83–59 cm, 6400–4000 cal yr BP) began with a peak in absorbance, which could be related to charcoal accumulation (see below). This zone was generally characterized by well-humified peat. At depths of 59–26 cm (4000–500 cal yr BP), absorbance gradually decreased, which could be related to a greater proportion of wood remains. In the zone from 26–9 cm (500–5 cal yr BP), absorbance remained low, most likely due to increased surface moisture associated with the appearance of *Sphagnum* mosses at the site. The upper layer (9–0 cm, 5 cal yr BP– present) was characterized by gradually decreasing peat humification due to the presence of poorly humified plant remains.

Analysis of LOI in Monolith 1 showed that the organic content was high throughout the entire peat profile with the exception of the base of the sequence (88–85 cm), where it varied from 70 to 75%. Above 85 cm, the organic content increased sharply to 92% (85–68 cm, 6600–5000 cal yr BP) and then gradually rose to 96–97% at 68–25 cm (5000–500 cal yr BP). In the upper layers, LOI declined to 92–94%; this

**Table 1.** Details of radiocarbon dates used in this study.

Laboratory code	Depth (cm)	Material	Radiocarbon date ( $^{14}\text{C}$ yr BP)	Calibrated age range, 95% confidence interval
Monolith 1				
IG RAS 4721	8–9	<i>Sphagnum</i>	$125.07 \pm 2.63\%$	AD 1955–1958
IG RAS 4722	24–25	Bulk peat	$440 \pm 60$	421–551 BP
IG RAS 4723	44–45	Bulk peat	$2830 \pm 70$	2783–3082 BP
IG RAS 4724	59–60	Bulk peat	$3690 \pm 70$	3846–4183 BP
IG RAS 4726	84–85	Bulk peat	$5810 \pm 80$	6436–6790 BP
Monolith 2				
IG RAS 4728	14–15	<i>Sphagnum</i>	$134.34 \pm 2.91\%$	AD 1955–1957
IG RAS 4729	34–35	Bulk peat	$1030 \pm 60$	891–1060 BP
Monolith 3				
IG RAS 4727	24–25	Bulk peat	$990 \pm 60$	768–1004 BP
Monolith 4				
IG RAS 4590	39–40	Bulk peat	$1680 \pm 70$	1407–1737 BP



**Figure 3.** Plant macrofossil diagram also showing degree of peat decomposition (R), for (a) Monolith 1, (b) Monolith 2, and (c) Monolith 3. Loss on ignition (LOI) and humification results as absorbance values (solid line, raw readings; dotted line, corrected for LOI) are also shown for Monolith 1.

suggests an influx of mineral material, although there was very little mineral content in the uppermost 4 cm of fresh vegetation.

Plant macrofossil analysis of Monoliths 2 and 3 showed that both profiles consisted of two distinct layers, separated at the depth of 15 cm in Monolith 2 and 11 cm in Monolith 3 (Fig. 3B and C). The lower layers were formed of well-decomposed wood and graminoid peat, with the decomposition degree gradually decreasing from 70 to 40% up the profile. *Picea* was the most significant macrofossil

component overall but decreased in abundance towards the top of both profiles. The upper layers were less decomposed (5–15%) and mainly consisted of *Sphagnum fallax*, *S. angustifolium*, and *S. girgensohnii*.

### Testate amoebae

Testate amoebae were uncommon in the peat deposits and were not observed below 38 cm (Fig. 4). Amoebae initially became abundant with the appearance and development of

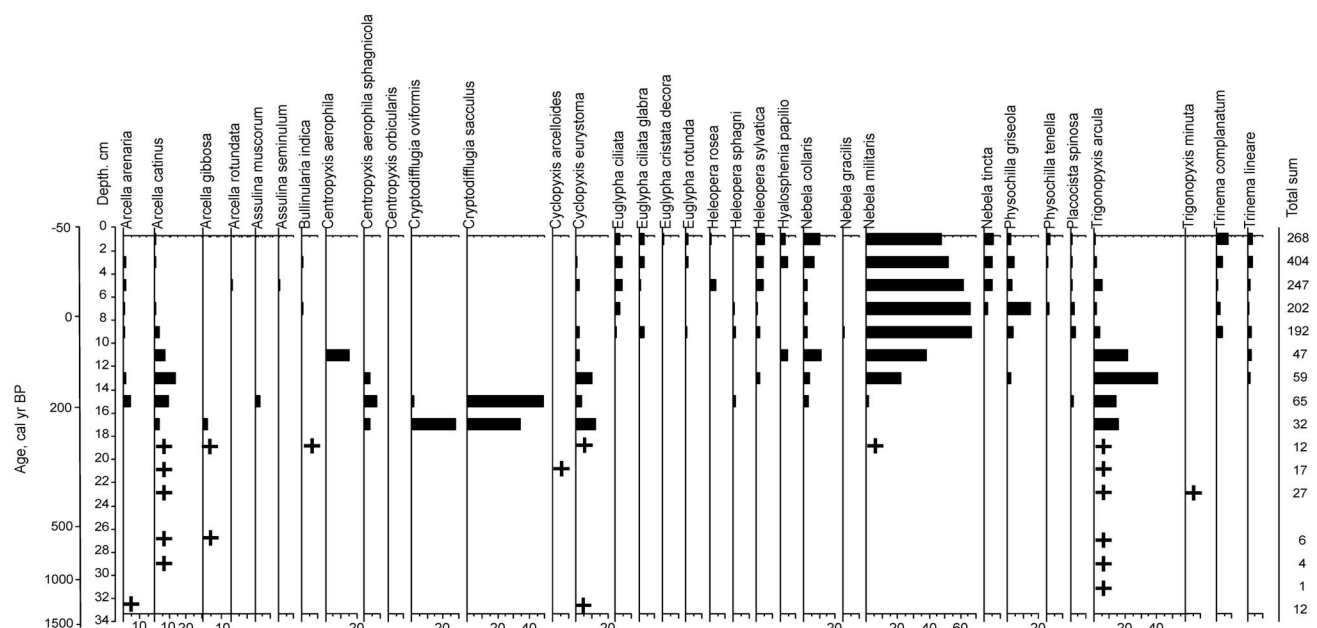


Figure 4. Testate amoeba diagram for Monolith 1.

*Sphagnum* mosses at a depth of 24 cm (430 cal yr BP). Overall, 33 taxa of testate amoebae were identified, with the most abundant being *Nebela militaris* (49% of the total count), *Trigonopyxis arcuata* (6%), *Nebela collaris* (5%), *Arcella catinus* (5%), and *Physochilla griseola* (4%). Changes in testate amoeba assemblages indicated a shift from dry to moderately wet surface moisture conditions at a depth of 13 cm (110 cal yr BP).

### Pollen analysis and microscopic charcoal

The pollen diagram could be divided into seven local pollen assemblage zones (PAZ), corresponding to the main phases of vegetation development (Fig. 5).

PAZ 1 (88–82 cm, 7000–6520 cal yr BP) was dominated by arboreal pollen (up to 80%), with *Betula*, *Alnus*, and *Pinus* most abundant. Pollen of *Picea*, *Corylus*, and broadleaved

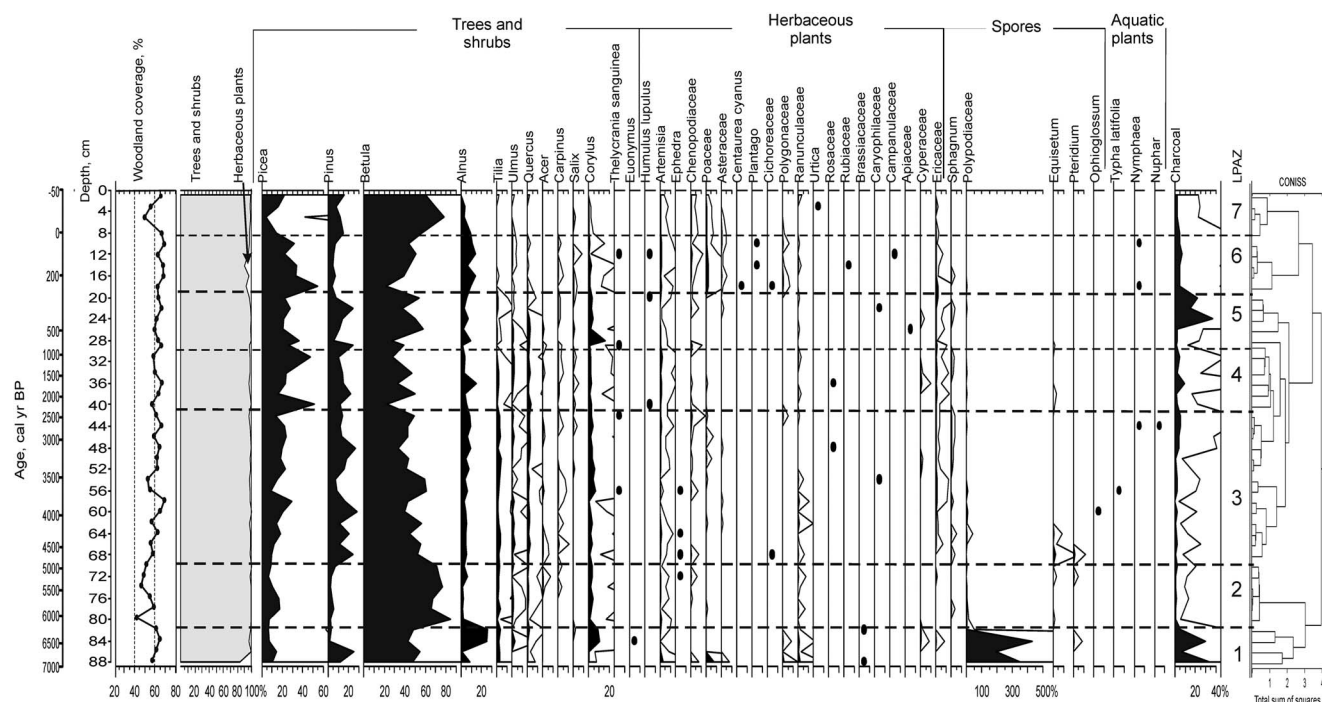


Figure 5. Pollen diagram and microscopic charcoal concentrations for Monolith 1. Pollen sum: arboreal pollen + non-arboreal pollen (AP + NAP); additional curves represent 10× exaggeration of base curves.

trees (*Quercus*, *Ulmus*, and *Tilia*) were present in lesser quantities; only a few grains of *Salix* and *Euonymus* were found. The NAP group was dominated by Poaceae and *Artemisia*, with Ranunculaceae, Polygonaceae, and Asteraceae less abundant. Spores of Polypodiaceae were notably very abundant (from 200 to 400% of AP + NAP), while spores of *Pteridium* and *Sphagnum* occurred occasionally.

Pollen assemblages of zone PAZ 2 (82–70 cm, 6520–5350 cal yr BP) were characterized by a noticeable peak in *Betula* (up to 80%), whereas all other taxa, except for *Picea* (10–20%), were reduced. After their substantial abundance in PAZ 1, Polypodiaceae spores decreased abruptly to 1–2%.

In PAZ 3 (70–42 cm, 5320–2580 cal yr BP), the proportion of AP increased to 98%, associated with greater abundances of *Pinus*, *Tilia*, *Quercus*, and *Ulmus* but reduced *Betula*. The proportion of *Picea* pollen gradually increased (30 to 50%), while some grains of *Carpinus* and *Thelycrania* cf. *sanguinea* were noted. Among the NAP group, Asteraceae, Chenopodiaceae, Ranunculaceae, and Ericaceae were common, whereas *Artemisia* and Poaceae were present but rare (0.5–1%). The proportion of spores (*Sphagnum*, Polypodiaceae, *Equisetum*, and *Pteridium*) was less than 10%.

PAZ 4 (42–30 cm, 2580–1200 cal yr BP) was characterized by a considerable increase in *Picea* and *Alnus* to 55% and 20%, respectively. The composition of herbaceous pollen and spores was similar to the previous zone.

A noticeable decrease in the proportions of *Picea*, *Quercus*, and *Tilia* was detected in PAZ 5 (30–20 cm, 1200–350 cal yr BP). At the same time, the proportion of *Betula* pollen rose to 60%. The lower boundary of the zone was marked by small peak of *Corylus* pollen (20%). The proportions of NAP (mainly Ericales, *Artemisia*, Apiaceae, Caryophyllaceae, and *Humulus lupulus*) were generally low.

AP proportions in PAZ 6 (20–9 cm, 350–5 cal yr BP) remained relatively high (90–95%) and were maximal for *Picea* (60%) and *Alnus* (up to 20%). *Tilia* and *Quercus* disappeared completely; *Ulmus* and *Corylus* declined considerably, while *Betula* continued to be abundant (50%). The abundance of the NAP group slightly increased and was mainly composed of *Artemisia*, Chenopodiaceae, Asteraceae, and Polygonaceae. The pollen of ruderal plants (*Centaurea cyanus*, *Plantago*, Cichoriaceae, and Rubiaceae) was noted.

The uppermost layer of the monolith (PAZ 7, 9–0 cm, the last 60 years), was marked by increased proportions of *Betula* (above 80%) and *Pinus* (15–20%), with a simultaneous decrease in the proportions of *Picea* and *Alnus*. The proportion of *Picea* pollen varied between 10 and 20%, whereas the proportion of *Alnus* was less than 7%. Among the NAP group, *Artemisia*, Poaceae, and Chenopodiaceae were common. Pollen of *Urtica* was also present.

The micro-charcoal accumulation rate (CHAR) was about 4000–6000 particles cm<sup>-2</sup> yr<sup>-1</sup> during 7000–6520 cal yr BP. Throughout the majority of the sequence (6520 to 540 cal yr BP) CHAR varied in the range of 100–700 particles cm<sup>-2</sup> yr<sup>-1</sup>, with peaks up to 2500–3000 particles cm<sup>-2</sup> yr<sup>-1</sup> at 4090, 3200, 2820, 1860, and 1200 cal yr BP. A distinct peak of CHAR (54400 particles cm<sup>-2</sup> yr<sup>-1</sup>) was detected at 450–400

cal yr BP. During the last 400 years CHAR varied from 3000 to 20000 particles cm<sup>-2</sup> yr<sup>-1</sup>.

## Woodland coverage

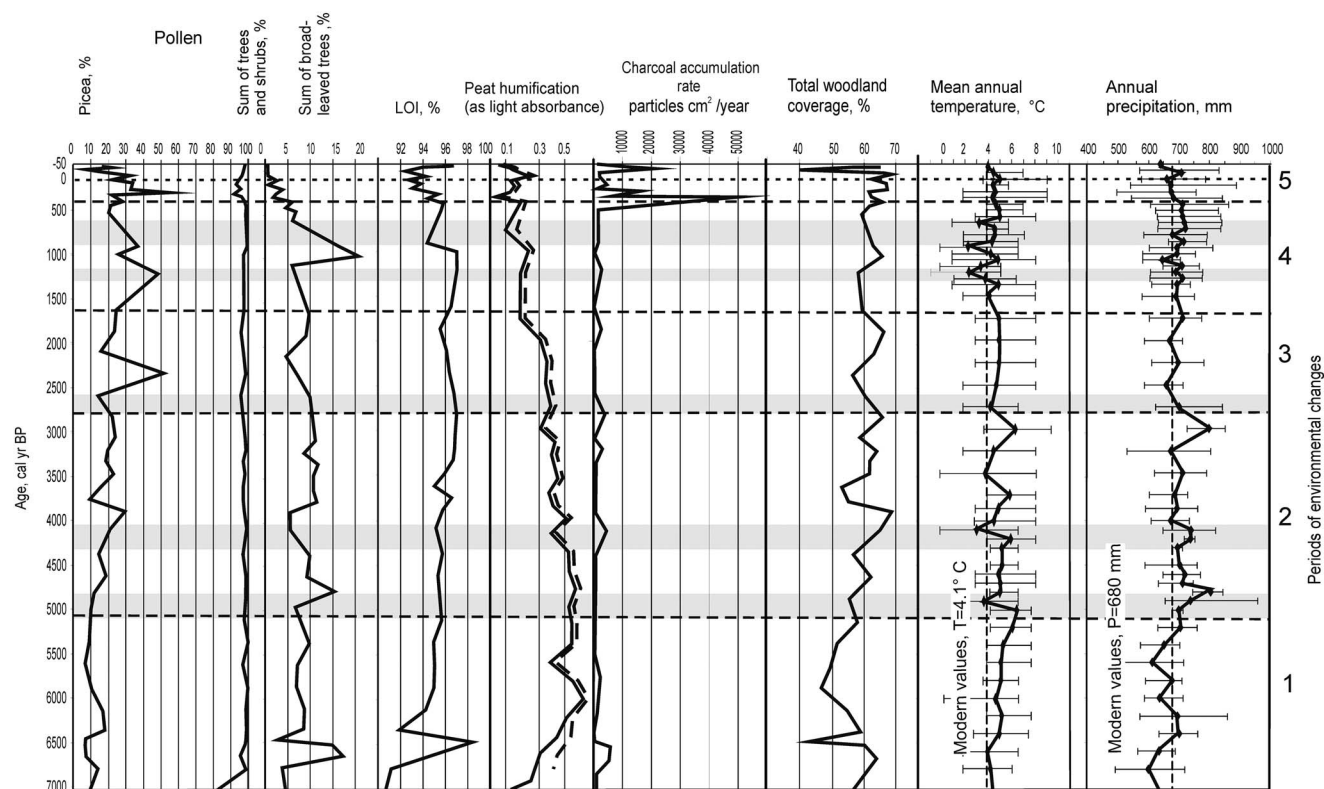
Reconstructed woodland coverage (Fig. 5) in the study area was about 60–70% during 7000–6520 cal yr BP, decreasing to 40–50% from 6200–5000 cal yr BP. Woodland coverage remained relatively high (60–70%) until the last 50 years when a considerable reduction was reconstructed at 7–5 cm (in the middle of the twentieth century), corresponding to an abrupt reduction in *Picea* and an increase in *Betula*.

## DISCUSSION

### The time period 7000–5500 cal yr BP

Analyses of pollen, plant macrofossils, peat humification, testate amoebae, and micro-charcoal from this small forest peatland allowed us to reconstruct vegetation dynamics and peatland development over the last 7000 years. The initial stages of peatland development were characterized by a predominance of eutrophic herbaceous plants and relatively high peat accumulation rates, as is typical for fens in this type of landscape (e.g., Kalnina et al., 2015). The pollen and plant macrofossil data suggests that the study area was occupied by a broadleaved forest of *Tilia*, *Quercus*, *Ulmus*, *Alnus*, *Betula*, and some *Picea* during the period 7000–6600 cal yr BP. The well-developed shrub understory included *Viburnum opulus*, *Corylus avellana*, *Frangula alnus*, and *Salix* sp. The high micro-charcoal accumulation rate detected between 7000 and 6300 cal yr BP indicates relatively intensive burning in adjacent areas. Total woodland coverage declined from 6200–5000 cal yr BP (Fig. 6), most likely due to fire, with *Betula* and *Pinus* partly replacing other species in secondary forest (Gromtsev, 2002). The same features were observed in a number of pollen diagrams from boreal forests in Finland (Clear et al., 2015), Russian Karelia (Kuosmanen et al., 2016), and central European Russia (Novenko et al., 2016), where pollen values of pioneer trees (*Pinus*, *Betula*, *Alnus*, and *Populus*) increased significantly following charcoal peaks. It is important to note, however, that the abundance of wind-pollinated plants with high pollen productivity, such as *Betula*, *Alnus*, and *Pinus*, is always overestimated (Lisitsyna et al., 2011; Marquer et al., 2014; Novenko et al., 2017).

Pollen data from a number of other sites in the East European Plain, including locations in Estonia (Seppä and Poska, 2004; Niinemets and Saarse, 2009), Latvia (Heikkilä and Seppä, 2010), Lithuania (Stančikaite et al., 2006), Belarus (Zernitskaya and Mikhailov, 2009), and European Russia (Arslanov et al., 1999; Kremenetski et al., 2000; Velichko et al., 2001; Novenko et al., 2009b, 2015), demonstrated a wide distribution of broadleaved forests with *Quercus* and *Ulmus* as dominant species during 7000–5500 cal yr BP. Pollen grains of *Picea* are commonly found in pollen assemblages, but their low abundances indicate scattered presence within forest dominated by broadleaved



**Figure 6.** Holocene climate reconstructions from Staroselsky Moch peatland (modified from Novenko et al., 2009a) and summary of results of multiproxy analysis of Monolith 1 in this study including: peat humification, LOI, characteristic pollen taxa, and micro-charcoal accumulation rate. Gray bands indicate intervals of cool climate.

species. In contrast, in eastern and northeastern regions of European Russia the proportion of spruce pollen was greater (up to 5–10%) (Velichko et al., 2001) indicating more mixed coniferous-broadleaved forests (Gieseke and Bennet, 2004). Spruce was still more abundant in this time period in Karelia (northwestern Russia) with *Picea* pollen around 20–30% of the assemblages at about 7000 cal yr BP (Kuosmanen et al., 2016).

A previously published climate reconstruction based on the pollen data from Staroselsky Moch peatland (Novenko et al., 2009a) suggested that the mean annual temperature in the study area was about 5–7°C between 7000 and 5500 cal yr BP, which exceeds modern values by 1–3°C (Fig. 6) and accords with reconstructions in the Baltic region and Fennoscandia (Seppä and Birks, 2001; Heikkilä and Seppä, 2010). Annual precipitation was about 550 mm yr<sup>-1</sup> during 7000–6600 cal yr BP and slightly higher (600–700 mm) during 6600–5500 cal yr BP, similar to modern values. The climatic conditions between 7000 and 5500 cal yr BP were drier than present, probably due to low summer precipitation and high evapotranspiration, as indicated by a high degree of peat decomposition (above 70%, see Fig. 3A) and high fire activity. Charcoal data from a number of peatlands in Northern Karelia, Finland (Pitkänen et al., 2001; Kasin et al., 2013) and the Meshchera Lowlands (Novenko et al., 2016), suggest that the mid-Holocene, and especially the period 8000–6000 cal yr BP, was characterized by intensive forest fires.

### The time period 5500–2600 cal yr BP

Palaeoclimatic reconstructions based on various natural archives in Europe have demonstrated that the Holocene thermal maximum was followed by gradual climatic cooling at 5700–5500 cal yr BP (Davis et al., 2003; Wanner et al., 2008; Mauri et al., 2015), possibly influenced by a decrease in summer insolation (Berger, 1978; Wright et al., 1993). The temperature decline triggered vegetation changes throughout the East European Plain, with an increasing abundance of *Picea* and *Pinus* in forest communities and a reduced abundance of broadleaved trees. However, the proportion of broadleaved trees in forests remained relatively high in central European Russia, Belarus, and the Baltic States during the period 5700–4000 cal yr BP (Kremenetski et al., 2000; Heikkilä and Seppä, 2010; Zernitskaya et al., 2015). The increasing proportion of *Picea* in pollen assemblages from the northern and northeastern parts of European Russia suggests an active expansion of spruce following 5700 cal yr BP. Pollen data from the Polovetsko-Kupanskoye peatland (Khotinski and Klimanov, 1997) and Galich Lake (Velichko et al., 2001) in the Upper Volga region show that the proportion of *Picea* in the assemblages rose to 70–80% at 5500 cal yr BP. The proportion of *Picea* in the pollen spectra of Staroselsky Moch peat bog also increased to 40%, compared to 20% in the Lesnoye peat monolith. In modern pollen

assemblages from spruce forests within the southern taiga zone *Picea* pollen values vary from 12 to 40 % (Nosova et al., 2015), strongly suggesting the existence of spruce forest in the study area during this interval. However, the proportion of *Picea* macrofossils in the peat monolith remained low until 4000 cal yr BP, suggesting that, while spruce was present in the landscape it was not growing in the immediate vicinity of the sampling point. Local vegetation of the peatland was dominated by *Calamagrostis* sp. and other herbs, implying rich fen conditions that were not conducive to tree establishment.

Considerable changes in both the local peatland ecosystem and the surrounding area occurred after 4000 cal yr BP. In the peat monolith, this boundary was marked by a transition from eutrophic herb peat to highly decomposed wood peat with high organic matter content.

A sharp increase in the abundance of *Picea* macrofossil remains (to 55–60%; Fig. 3A) and pollen occurred after 4000 cal yr BP. This is consistent with the observation that, after 4000 cal yr BP, *Picea* reached its maximum abundance during the Holocene in most sites in Belarus (Zernitskaya and Mikhailov, 2009) and the Baltic States (Saarse et al. 1998; Niinemets and Saarse, 2009). In a pollen record from Estonia, *Picea* was dominant during 4000–2500 cal yr BP, reaching 55–75% (Seppä and Poska, 2004). Nevertheless, broadleaved trees and *Corylus* persisted in the central part of the East European Plain, as indicated by their relatively high pollen values (Velichko et al., 2001; Kremenetski et al., 2000; Novenko et al., 2009a), and by the findings of wood remains in Monolith 1. Pollen of the shrub *Thelycrania sanguinea*, which is characteristic for broadleaved forests and absent in modern flora of the study region, was also found in pollen assemblages from Monolith 1.

Climate reconstructions for the study area based on pollen data from the Staroselsky Moch peatland show the first notable cooling at 5000 cal yr BP (Fig. 6), when the mean annual temperature was close to modern values (4.1°C). About 4000 cal yr BP, the mean annual temperature declined to 3°C and precipitation increased to 750–800 mm year<sup>-1</sup>. It appears that low evaporation and relatively high precipitation promoted an increasing proportion of *Picea* in the forest stands. According to the reconstruction of Olchev and Novenko (2011) based on a process-based evapotranspiration model (Olchev et al., 2002a), the ratio between actual evaporation and precipitation decreased from 0.60–0.65 during 7000–5700 cal yr BP to 0.55–0.60 for 5700–4500 cal yr BP. After 5000 cal yr BP, the aridity index (the ratio of annual precipitation to potential evapotranspiration [Budyko, 1974]) varied between 1.2 and 1.6. This agrees with the finding of moist surface conditions in the study area.

### The time period 2600 – 1600 cal yr BP

During the late Holocene, the proportion of spruce continued to increase. The layer of well-humified eutrophic peat formed between 2900 and 1600 cal yr BP in Monolith 1 included extensive remains of *Picea* and reconstructed woodland

coverage around the site reached 60–70%. This corresponds well to the modern forest cover (60%) estimated with MODIS data for relatively undisturbed areas in the forest zone of European Russia (Ershov, 2007). At about 2600 cal yr BP, spruce forest became the main vegetation type in the Eastern Europe Plain, particularly in areas where human impact had not yet led to significant changes of vegetation (Kremenetski et al., 2000; Seppä and Poska, 2004; Novenko et al., 2009b; Heikillä and Seppä, 2010; Zernitskaya et al., 2015). After 2600 cal yr BP, these coniferous forests spread from the Valdai Upland and the northeastern part of European Russia to the central regions. An abundance of *Picea* in the central part of European Russia is demonstrated by pollen assemblages from Dolgoe Lake (situated on the Smolensk-Moscow Upland in the Moscow region), where a pronounced maximum of *Picea* (up to 55%) and a sharp decrease in *Quercus*, *Ulmus*, *Tilia*, and *Corylus* pollen values occurred during 2600–1800 cal yr BP (Kremenetski et al., 2000).

Climate reconstructions for the period from 2600 cal yr BP to present based on pollen data from Staroselsky Moch peat bog showed large variations in temperature and precipitation. At the beginning of this period, mean annual temperature and precipitation were close to modern values (Fig. 6). Then, during the period of 2500–1600 cal yr BP, the temperature slightly increased to 4.5–5°C, whereas precipitation remained around 700 mm yr<sup>-1</sup>.

### The time period 1600 – 400 cal yr BP

After 1600 cal yr BP, vertical peat growth in the study area increased to 0.25 mm yr<sup>-1</sup> and the area of wetlands expanded beyond the local depressions, as indicated by the radiocarbon date from Monolith 4. The remains of wood and charcoal fragments found at the bottom of the deposits suggest that paludification of the spruce forest began after burning and disturbance of the tree canopy. This finding parallels that of studies in other locations across Europe where charcoal has been found associated with peat initiation, potentially due to reduced evapotranspiration triggering paludification (Caseildine and Hatton, 1993; Moore 1993). In the Lesnoye peatland, the increased micro-charcoal accumulation rate and high fluctuations in pollen values of *Picea*, *Betula*, and *Pinus* apparently indicate a high fire activity during 1500–1300 cal yr BP.

The pollen-based climatic reconstruction for the peat deposits of Staroselsky Moch revealed several cooling and warming phases between 1600 and 400 cal yr BP. Based on available data for northern Europe and the Baltic States, the gradual cooling during the second half of the Holocene was interrupted by several warming and cooling phases (Arslanov et al., 1999; Wanner et al., 2008; Davis et al., 2003; Heikillä and Seppä, 2010; Novenko et al., 2015). The area of wetlands at Lesnoye peatland expanded after 900 cal yr BP, as evidenced by the ages of the basal peat in Monoliths 2 and 3, located in the shallow “bridges” between the depressions in topography (Fig. 1). Paludification may have been promoted by a shift to cooler and wetter conditions at this time (Seppä and Poska,

2004; Mann et al., 2009). Changes in forest composition also occurred as wetlands expanded. Reduced abundance of broadleaved taxa and increasing *Picea* pollen percentages (Fig. 6) indicate that spruce forests replaced mixed broadleaved-spruce communities. The lower peat layers in Monoliths 1–2 feature the remains of *Picea*, Cyperaceae, Poaceae, and a small proportion of *Sphagnum*, consistent with an expansion of waterlogged spruce forest.

### The time period 400 cal yr BP – present

Considerable changes at the local and regional scale occurred during the last 400–350 years. The appearance and development of *Sphagnum* mosses at the Lesnoye site, increased peat accumulation rates, reduced humification, and abundant assemblages of testate amoebae indicate wet, acidic conditions favouring further forest paludification. Based on radiocarbon dating of peat depositions in a number of sites in the CFSNBR (Minayeva et al., 2008; Novenko et al., 2009b), paludification of spruce forests began after 400–300 cal yr BP. During the last 100 yr, soil moisture of the CFSNBR spruce forest became considerably higher, promoting the growth of *Sphagnum* mosses and resulting in the transformation of formerly dry forests to *Sphagnum*-spruce forest. The increase in the local moisture can be explained by the changes in hydrological regime as a result of deforestation: reduced forest cover appears to have led to greater surface run off.

Pollen records from lakes and peatlands throughout Europe show signs of human impacts on vegetation beginning in the mid-Holocene (Behre, 1981; Kalis et al., 2003; Ralska-Jasiewiczowa et al., 2003; Kaplan et al., 2009; Nii-nemets and Saarse, 2009; Marquer et al., 2014; Kunes et al., 2015). However, the CFSNBR is distant from major rivers and trade routes, and therefore it remained untouched by human activity until recently (Novenko et al., 2009b). The sharp increase in micro-charcoal accumulation rate in Monolith 1 at 450–400 cal yr BP and the reduced proportion of *Picea* and broadleaved trees in the forests stands coincided with the expansion of *Betula*. At the same time, the organic matter content of the peat dropped sharply, indicating a rise in mineral influx from the surrounding area that could be related to vegetation disturbance resulting from forest clearance for agriculture. Plant communities in the areas adjacent to the study site feature various taxa indicative of anthropogenic disturbance, erosion, and grasslands (Behre, 1981; Ralska-Jasiewiczowa et al., 2003), including *Centaurea cyanus*, *Plantago*, *Artemisia*, Chenopodiaceae, Asteraceae, Cichorioideae, Rubiaceae, and Poaceae. The pollen record from Staroselsky Moch peatland suggests that woodland coverage around the now abandoned village of Staroselie dropped to 30–40% (Novenko et al. 2014). The tree cover reconstructed from Monolith 1 remained around 50–60%, presumably because the study site is located away from lands suitable for agriculture. At 250 cal yr BP, the vegetation cover of the CFSNBR was characterized by a mosaic pattern, including not only mature spruce forests, but also secondary birch woodlands, meadows, and agricultural lands.

## CONCLUSIONS

Our multiproxy reconstruction based on pollen, plant macrofossils, micro-charcoal, peat humification, and testate amoeba analyses from Lesnoye peatland has provided new insights into the forest history, paludification dynamics, and environmental change in the central part of the East European Plain during the mid- and late Holocene. The results suggest that vegetation change and soil paludification have been driven by variations in climate and fire. Anthropogenic disturbances over the last few hundred years have also been important in shaping the contemporary vegetation.

Projected future climate changes for the study region suggest increases in mean annual temperature and precipitation with the potential to generate major changes in vegetation patterns and paludification processes. For example, the “moderate” RCP2.6 scenario (CMIP5 Climate Model Intercomparison Project5; IPCC, 2013) features a 2–3°C increase in mean annual temperature. Rising temperatures may lead to increased evapotranspiration, and drier conditions may, in turn, limit or even reverse the paludification that has been prevalent over recent centuries. More extreme climate change scenarios, such as RCP8.5, suggest even larger increases in temperature; such changes would have even more severe impacts on surface moisture and thereby on paludification.

It is clear from this study that the environmental factors controlling wetland development are complex, influenced by climate changes, disturbance events such as fires, and anthropogenic activities. By employing a variety of different paleoecological techniques we have been able to untangle some of these linkages, stressing the importance of a multiproxy approach in forest palaeoecology. Understanding and predicting future change in these landscapes similarly requires a multi-disciplinary approach combining paleoecology, modern ecological and climatological studies, and social science research.

## ACKNOWLEDGMENTS

This study was supported by a grant from the Russian Science Foundation (Grant 16-17-10045). UK-Russia cooperation was supported by the Royal Society (grant IE150173).

## REFERENCES

- Arslanov, Kh.A., Saveljeva, L.A., Gey, N.A., Klimanov, V.A., Chernov, S.B., Chernova, G.M., Kusmin, G.F., Tertychnaya, T.V., Subetto, D.A., Denisenkov, V.P., 1999. Chronology of vegetation and paleoclimate stages of Northwestern Russia during the late Glacial and Holocene. *Radiocarbon* 41, 25–45.
- Behre, K.-E., 1981. The interpretation of anthropogenic indicators in pollen diagrams. *Pollen et Spores* 23, 225–245.
- Berger, A., 1978. Long-term variations of caloric insolation resulting from the Earth's orbital elements. *Quaternary Research* 9, 138–167.
- Beug, H.-J., 2004. *Leitfaden der Pollenbestimmung für Mitteleuropa und angrenzende Gebiete*. Verlag Friedrich Pfeil, Munich.

- Blaauw, M., 2010. Methods and code for 'classical' age-modelling of radiocarbon sequences. *Quaternary Geochronology* 5, 512–518.
- Bonan, G.B., 2008. Forests and climate change: forcings, feedbacks, and the climate benefits of forests. *Science* 320, 1444–1449.
- Bonan, G.B., Pollard, D., Thompson, S.L., 1992. Effects of boreal forest vegetation on global climate. *Nature* 359, 716–718.
- Budyko, M.I., 1974. *Climate and Life*. Academic Press, Orlando.
- Caseldine, C., Hatton, J., 1993. The development of high moorland on Dartmoor: fire and the influence of Mesolithic activity on vegetation change. In Chambers, F.M. (Ed.), *Climate Change and Human Impact on the Landscape*. Chapman and Hall, London, pp. 119–131.
- Chambers, F.M., Beilman, D.W., Yu, Z., 2010/2011. Methods for determining peat humification and for quantifying peat bulk density, organic matter and carbon content for palaeostudies of climate and peatland. *Mires and Peat* 7, 1–10.
- Chepurnaya, A.A., Novenko, E.Yu., 2015. Pollen database from territory of Russia and adjacent countries as a tool for paleoecological research. *Russian Academy of Sciences, Izvestiya, Seria Geografiya* 1, 119–128.
- Clark, R.L., 1982. Point count estimation of charcoal in pollen preparations and thin sections of sediments. *Pollen et Spores* 24, 523–535.
- Clear, J.L., Seppä, H., Kuosmanen, N., Bradshaw, R.H.W., 2015. Holocene stand-scale vegetation dynamics and fire history of an old growth spruce forest in southern Finland. *Vegetation History and Archaeobotany* 24, 731–741.
- Davis, B.A.S., Brewer, S., Stevenson, A.C., Guiot, J., Data Contributors. 2003. The temperature of Europe during the Holocene reconstructed from pollen data. *Quaternary Science Reviews* 22, 1701–1716.
- Davis, B.A.S., Zanon, M., Collins, P., Mauri, A., Bakker, J., Barboni, D., Barthelmes, A., et al., 2013. The European modern pollen database (EMPD) project. *Vegetation History and Archaeobotany* 22, 521–530.
- Dean, W. Jr., 1974. Determination of carbonate and organic matter in calcareous sediments and sedimentary rocks by loss on ignition: comparison with other methods. *Journal of Sediment Research* 44, 242–248.
- Desherevskaya, O., Kurbatova, J., Olchev, A., 2010. Climatic conditions of the south part of Valdai Hills, Russia, and their projected changes during the 21st century. *Open Geography Journal* 3, 73–79.
- Dombrovskaya, A.V., Koreneva, M.M., Turemnov, S.N., 1959. *Atlas of Plant Remains in Peat* [In Russian.] Nauka, Moscow-Leningrad.
- Ershov, D.V., 2007. Methods of assessment of area covered by forests using satellite imaging MODIS of moderate spatial resolution. [In Russian.], *Modern Problems of Remote Sensing of the Earth from Space* 2, 217–225.
- Finsinger, W., Tinner, W., Hu, F.S., 2008. Rapid and accurate estimates of microcharcoal content in pollen slides. In Fiorentino, G., Magri, D. (Eds.), *Charcoals from the Past: Cultural and Palaeoenvironmental Implications* (BAR International Series Vol. 1807. Archaeopress, Oxford, pp. 121–124.
- Foley, J.A., Kutzbach, J.E., Coe, M.T., Levis, S., 1994. Feedbacks between climate and boreal forests during the Holocene epoch. *Nature* 371, 52–54.
- Giesecke, T., 2005. Moving front or population expansion: how did *Picea abies* (L.) Karst. become frequent in central Sweden? *Quaternary Science Reviews* 24, 2495–2509.
- Giesecke, T., Bennett, K.D., 2004. The Holocene spread of *Picea abies* (L.) Karst. in Fennoscandia and adjacent areas. *Journal of Biogeography* 31, 1523–1548.
- Glushkov, I.V., Sirin, A.A., Minayeva, T.Y., 2016. Influences of hydrological conditions on development of the watershed forest peatlands and boggy forests in the Central Forest Reserve. [In Russian.], *Lesovedenie* 6, 403–417.
- Grace, J., Meir, P., Malhi, Y., 2001. Keeping track of carbon flows between biosphere and atmosphere. In Press, M.C., Huntly, N., Levin, S. (Eds.), *Ecology: Achievement and Challenge: 41st Symposium of the British Ecological Society*. Blackwell Science, Blackwell. Boston, pp. 249–269.
- Grimm, E.C.A., 1987. CONISS: A FORTRAN 77 program for stratigraphically constrained cluster analysis by the method of incremental sum of squares. *Computers and Geosciences* 13, 13–35.
- Grimm, E.C.A., 1990. TILIA and TILIA\*GRAPH.PC spreadsheet and graphics software for pollen data. *INQUA Working Group on Data-Handling Methods Newsletter* 4, 5–7.
- Gromtsev, A., 2002. Natural disturbance dynamics in the boreal forests of European Russia: a review. *Silva Fennica* 36, 41–55.
- Hansen, M., Townshend, J., DeFries, R., Carroll, M., 2005. Estimation of tree cover using MODIS data at global, continental and regional/local scales. *International Journal of Remote Sensing* 26, 4359–4380.
- Heikkilä, M., Seppä, H., 2010. Holocene climate dynamics in Latvia, eastern Baltic region: a pollen-based summer temperature reconstruction and regional comparison. *Boreas* 39, 705–719.
- Hendon, D., Charman, D.J., 1997. The preparation of testate amoebae (Protozoa: Rhizopoda) samples from peat. *The Holocene* 7, 199–205.
- Hua, Q., Barbetti, M., Rakowski, A.Z., 2013. Atmospheric radiocarbon for the period 1950–2010. *Radiocarbon* 55, 2059–2072.
- Hytteborn, H., Maslov, A.A., Nazimova, D.I., Rysin, L.P., 2005. Boreal forests of Eurasia. In Andersson, F. (Ed.), *Ecosystems of the World 6: Coniferous Forests*. Elsevier, Amsterdam, pp. 23–98.
- Intergovernmental Panel on Climate Change (IPCC). 2013. *Climate Change 2013: The Physical Science Basis*. Cambridge University Press, Cambridge.
- Kalis, A.J., Merkt, J., Wunderlich, J., 2003. Environmental changes during the Holocene climatic optimum in central Europe - human impact and natural causes. *Quaternary Science Reviews* 22, 33–79.
- Kalnina, L., Stivrins, N., Kuske, E., Ozola, I., Pujate, A., Zeimule, S., Grudzinska, I., Ratniece, V., 2015. Peat stratigraphy and changes in peat formation during the Holocene in Latvia. *Quaternary International* 383, 186–195.
- Kaplan, J.O., Kristen M. Krumhardt, K.M., Zimmermann, M., 2009. The prehistoric and preindustrial deforestation of Europe. *Quaternary Science Reviews* 28, 3016–3034.
- Kasin, I., Blanck, Y., Storaunet, K.O., Rolstad, J., Ohlson, M., 2013. The charcoal record in peat and mineral soil across a boreal landscape and possible linkages to climate change and recent fire history. *The Holocene* 23, 1052–1065.
- Katz, N.Y., Katz, S.V., Skobeva, E.I., 1977. *Atlas of Plant Remains in Peat* [In Russian.] Nedra-press, Moscow.
- Khotinski, N.A., Klimanov, V.A., 1997. Alleröd, Younger Dryas and early Holocene palaeo-environmental stratigraphy. *Quaternary International* 41/42, 67–70.
- Kilpeläinen, A., Kellomäki, S., Strandman, H., Venäläinen, A., 2010. Climate change impacts on forest fire potential in boreal conditions in Finland. *Climatic Change* 103, 383–198.

- Kremetski, K.V., Borisova, O.K., Zelikson, E.M., 2000. The Late Glacial and Holocene history of vegetation in the Moscow region. *Paleontological Journal* 34, 67–74.
- Kunes, P., Svobodova-Svitavska, H., Kolar, J., Hajnalova, M., Abraham, V., Macek, M., Tkac, P., Szabo, P., 2015. The origin of grasslands in the temperate forest zone of east-central Europe: long-term legacy of climate and human impact. *Quaternary Science Reviews* 116, 15–27.
- Kuosmanen, N., Seppä, H., Reitalu, T., Alenius, T., Bradshaw, R. W.H., Clear, J.L., Filimonova, L., Kuznetsov, O., 2016. Long-term forest composition and its drivers in taiga forest in NW Russia. *Vegetation History and Archaeobotany* 25, 221–236.
- Lishtvan, I.I., Korol, N.T., 1975. *The Main Properties of Peat and Methods of its Determination* [In Russian.] Nauka i Tekhnika, Minsk.
- Lisitsyna, O.V., Giesecke, T., Hicks, S., 2011. Exploring pollen percentage threshold values as an indication for the regional presence of major European trees. *Review of Palaeobotany and Palynology* 166, 311–324.
- Luyssaert, S.E., Schulze, D., Börner, A., Knohl, A., Hessenmöller, D., Law, B.E., Ciais, P., Grace, J., 2008. Old-growth forests as global carbon sinks. *Nature* 455, 213–215.
- Malhi, Y., Baldocchi, D.D., Jarvis, P.G., 1999. The carbon balance of tropical, temperate and boreal forests. *Plant Cell and Environment* 22, 715–740.
- Mann, M.E., Zhang, Z., Rutherford, S., Bradley, R.S., Hughes, M.K., Shindell, D., Ammann, C., Faluvegi, G., Ni, F., 2009. GLOBAL signatures and dynamical origins of the Little Ice Age and Medieval climate anomaly. *Science* 326, 1256–1260.
- Marquer, L., Gaillard, M.-J., Sugita, S., Trondman, A.-K., Mazier, F., Nielsen, A.B., Fyfe, R.M., et al., 2014. Holocene changes in vegetation composition in northern Europe: why quantitative pollen-based vegetation reconstructions matter. *Quaternary Science Reviews* 90, 199–216.
- Mauquoy, D., Engelkes, T., Groot, M.H.M., Markesteijn, F., Oudejans, M.G., van der Plicht, J., van Geel, B., 2002. High-resolution records of late Holocene climate change and carbon accumulation in two north-west European ombrotrophic peat bogs. *Palaeogeography, Palaeoclimatology, Palaeoecology* 186, 275–310.
- Mauquoy, D., Yeloff, D., 2008. Raised peat bog development and possible responses to environmental changes during the mid- to late-Holocene. Can the palaeoecological record be used to predict the nature and response of raised peat bogs to future climate change? *Biodiversity and Conservation* 17, 2139–2151.
- Mauri, A., Davis, B.A.S., Collins, P.M., Kaplan, J.O., 2015. The climate of Europe during the Holocene: a gridded pollen-based reconstruction and its multi-proxy evaluation. *Quaternary Science Reviews* 112, 109–127.
- Mazei, Yu, Chernyshov, V., Tsyganov, A.N., Payne, R.J., 2015. Testing the effect of refrigerated storage on testate amoeba samples. *Microbial Ecology* 70, 861–864.
- Minayeva, T.Yu., Trofimov, S.Ya., Dorofeyeva, E.I., Chichagova, O.A., Sirin, A.A., Glushkov, I.V., Mikhailov, N.D., Kromer, B., 2008. Carbon accumulation in soils of forest and bog ecosystems of southern Valdai in the Holocene. *Biology Bulletin* 35, 524–532.
- Mitsch, W.J., Bernal, B., Nahlik, A.M., Mander, U., Zhang, L., Anderson, C.J., Jørgensen, S.E., Brix, H., 2013. Wetlands, carbon, and climate change. *Landscape Ecology* 28, 583–597.
- Moore, P.D., 1993. The origin of blanket mire, revisited. In Chambers, F.M. (Ed.), *Climate Change and Human Impact on the Landscape*. Chapman and Hall, London, pp. 217–224.
- Moore, P.D., Webb, J.A., Collinson, M.E., 1991. *Pollen Analysis*. Blackwell, Oxford.
- Nakagawa, T., Tarasov, P., Kotoba, N., Gotanda, K., Yasuda, Y., 2002. Quantitative pollen-based climate reconstruction in Japan: application to surface and late Quaternary spectra. *Quaternary Science Reviews* 21, 2099–2113.
- Niinemets, E., Saarse, L., 2009. Holocene vegetation and land-use dynamics of south-eastern Estonia. *Quaternary International* 207, 104–116.
- Nosova, M.B., Severova, E.E., Volkova, O.A., Kosenko, J.V., 2015. Representation of *Picea* pollen in modern and surface samples from Central European Russia. *Vegetation History and Archaeobotany* 24, 319–330.
- Novenko, E., Olchev, A., Deshcherevskaya, O., Zukanova, I., 2009a. Paleoclimatic reconstructions for the south of Valdai Hills (European Russia) as paleo-analogs of possible regional vegetation changes under global warming. *Environmental Research Letters* 4, 045016. <http://dx.doi.org/10.1088/1748-9326/4/4/045016>.
- Novenko, E.Y., Tsyganov, A.N., Volkova, E.M., Babeshko, K.V., Lavrentiev, N.V., Payne, R.J., Mazei, Y.A., 2015. The Holocene palaeoenvironmental history of Central European Russia reconstructed from pollen, plant macrofossil and testate amoeba analyses of the Klukva peatland, Tula region. *Quaternary Research* 2015, 459–468.
- Novenko, E.Y., Tsyganov, A.N., Volkova, E.M., Kupriyanov, D.A., Mironenko, I.V., Babeshko, K.V., Utkina, A.S., Popov, V., Mazei, Y.A., 2016. Mid- and Late Holocene vegetation dynamics and fire history in the boreal forest of European Russia: a case study from Meshchera Lowlands. *Palaeogeography, Palaeoclimatology, Palaeoecology* 459, 570–584.
- Novenko, E.Y., Ereemeeva, A.P., Chepurayeva, A.A., 2014. Reconstruction of Holocene vegetation, tree cover dynamics and human disturbances in central European Russia, using pollen and satellite data sets. *Vegetation History and Archaeobotany* 23, 109–119.
- Novenko, E.Yu., Mazei, N.G., Zernitskaya, V.P., 2017. Recent pollen assemblages from protected areas of European Russia as a key to interpreting the results of paleoecological studies. *Nature Conservation Research* 2, 55–65.
- Novenko, E.Yu., Volkova, E.M., Nosova, M.B., Zukanova, I.S., 2009b. Late Glacial and Holocene landscape dynamics in the southern taiga zone of East European Plain according to pollen and macrofossil records from the Central Forest State Reserve (Valdai Hills, Russia). *Quaternary International* 207, 93–103.
- Olchev, A., Novenko, E., 2011. Estimation of potential and actual evapotranspiration of boreal forest ecosystems in the European part of Russia during the Holocene. *Environmental Research Letters* 6, 045213.
- Olchev, A.V., Deshcherevskaya, O.A., Kurbatova, Yu.A., Molchanov, A.G., Novenko, E.Yu., Pridacha, V.B., Sazonova, T.A., 2013. CO<sub>2</sub> and H<sub>2</sub>O exchange in the forest ecosystems of Southern Taiga under climate changes. *Doklady Biological Sciences* 450, 173176.
- Oltchev, A., Cermak, J., Gurtz, J., Kiely, G., Nadezhkina, N., Tishenko, A., Zappa, M., et al., 2002a. The response of the water fluxes of the boreal forest region at the Volga's source area to climatic and land-use changes. *Physics and Chemistry of the Earth* 27, 675–690.
- Oltchev, A., Cermak, J., Nadezhkina, N., Tatarinov, F., Tishenko, A., Ibrom, A., Gravenhorst, G., 2002b. Transpiration of a mixed forest stand: field measurements and simulation using

- SVAT models. *Journal of Boreal Environmental Research* 7, 389–397.
- Overpeck, J.T., Webb, T. III., Prentice, I.C.A., 1985. Quantitative interpretation of fossil pollen spectra: dissimilarity coefficients and the method of modern analogs. *Quaternary Research* 23, 87–108.
- Payne, R.J., Malysheva, E., Tsyganov, A.N., Pampura, T., Novenko, E., Volkova, E., Babeshko, K., Mazei, Yu., 2016. A multi-proxy record of Holocene environmental change, peatland development and carbon accumulation from Staroselsky Moch peatland, Russia. *The Holocene* 26, 314–326.
- Pitkänen, A., Tolonen, K., Jungner, H., 2001. A basin-based approach to the long-term history of forest fires as determined from peat strata. *The Holocene* 11, 599–605.
- Pluchon, N., Hugelius, G., Kuusinen, N., Kuhry, P., 2014. Recent paludification rates and effects on total ecosystem carbon storage in two boreal peatlands of Northeast European Russia. *The Holocene* 24, 1126–1136.
- R Core Team. 2014. *R: A language and environment for statistical computing*. R Foundation for Statistical Computing, Vienna, Austria <http://www.R-project.org/>.
- Ralska-Jasiewiczowa, M., Nalepka, D., Goslar, T., 2003. Some problems of forest transformation at the transition to the oligocratic/Homo sapiens phase of the Holocene interglacial in northern lowlands of central Europe. *Vegetation History and Archaeobotany* 12, 233–247.
- Reille, M., 1992. *Pollen et Spores d'Europe et d'Afrique du Nord*. Laboratoire de Botanique Historique et Palynologie, Marseille.
- Reimer, P.J., Bard, E., Bayliss, A., Beck, J.W., Blackwell, P.G., Bronk Ramsey, C., Buck, C.E., et al., 2013. IntCal13 and Marine13 Radiocarbon Age Calibration Curves, 0–50,000 Years cal BP. *Radiocarbon* 55, 1869–1887.
- Ruckstuhl, K.E., Johnson, E.A., Miyanishi, K., 2008. Introduction: the boreal forest and global change. *Philosophical Transactions of the Royal Society B: Biological Sciences* 363, 2245–2249.
- Saarse, L., Poska, A., Kaup, E., Heinsalu, A., 1998. Holocene environmental events in the Viitna area, north Estonia. *Proceedings of the Estonian Academy of Sciences, Geology* 47, 31–44.
- Seppä, H., Birks, H.J.B., 2001. July mean temperature and annual precipitation trends during the Holocene in the Fennoscandian tree-line area: pollen-based climate reconstructions. *The Holocene* 11, 527–539.
- Seppä, H., Poska, A., 2004. Holocene annual mean temperature changes in Estonia and their relationship to solar insolation and atmospheric circulation patterns. *Quaternary Research* 61, 22–31.
- Shugart, H.H., Woodward, F.I., 2011. *Global Change and the Terrestrial Biosphere: Achievements and Challenges*. Wiley-Blackwell Press, Oxford.
- Simpson, G.L., 2007. Analogue Methods in Palaeoecology: Using the analogue package. *Journal of Statistical Software* 22, 1–29.
- Soja, A.J., Tchepakova, N.M., French, N.H.F., Flannigan, M.D., Shugart, H.H., Stocks, B.J., Sukhinin, A., Parfenova, E., Chapin, F.S. III., Stackhouse, P.W., 2007. Climate-induced boreal forest change: Predictions versus current observations. *Global and Planetary Change* 56, 274–296.
- Stančikaite, M., Baltrušas, V., Šinkūnas, P., Kisieliene, D., Ostrauskas, T., 2006. Human response to the Holocene environmental changes in the Biržulis Lake region, NW Lithuania. *Quaternary International* 150, 113–129.
- Stockmarr, J., 1971. Tablets with spores used in absolute pollen analysis. *Pollen et Spores* 1, 615–621.
- Tuittila, E.-S., Juutinen, S., Froking, S., Väiranta, M., Laine, A.M., Miettinen, A., Seväkivi, M.-L., Quillet, A., Merilä, P., 2014. Wetland chronosequence as a model of peatland development: Vegetation succession, peat and carbon accumulation. *The Holocene* 23, 25–35.
- van der Linden, M., Heijmans, M.P.D., van Geel, B., 2014. Carbon accumulation in peat deposits from northern Sweden to northern Germany during the last millennium. *The Holocene* 24, 1117–1125.
- Velichko, A.A., Kremenetski, K.V., Negendank, J., Mingram, J., Borisova, O.K., Gribchenko, Yu.N., Zelikson, E.M., et al., 2001. Late Quaternary paleogeography of the north-east of Europe based (on the complex study of the Galich lake sediments). [In Russian.], *Russian Academy of Sciences, Izvestiya, Seria Geografiya* 3, 42–54.
- Wanner, H., Beer, J., Bütikofer, J., Crowley, T.J., Cubasch, U., Flückiger, J., Goosse, H., et al., 2008. Mid- to Late Holocene climate change: an overview. *Quaternary Science Reviews* 27, 1791–1828.
- Wright, H.E., Kutzbach, J.E., Webb, T., III, Ruddiman, W.F., Street-Perrot, E.A., Bartlein, P.J. (Eds.), 1993. *Global Climates Since the Last Glacial Maximum*. University of Minnesota Press, Minneapolis, Minnesota.
- Zernitskaya, V., Mikhailov, N., 2009. Evidence of early farming in the Holocene pollen spectra of Belarus. *Quaternary International* 203, 91–104.
- Zernitskaya, V., Stančikaitė, M., Vlasov, B., Šeiriene, V., Kisieliene, D., Gryguc, G., Skipitytė, R., 2015. Vegetation pattern and sedimentation changes in the context of the Lateglacial climatic events: case study of Staroje Lake (Eastern Belarus). *Quaternary International* 386, 70–82.